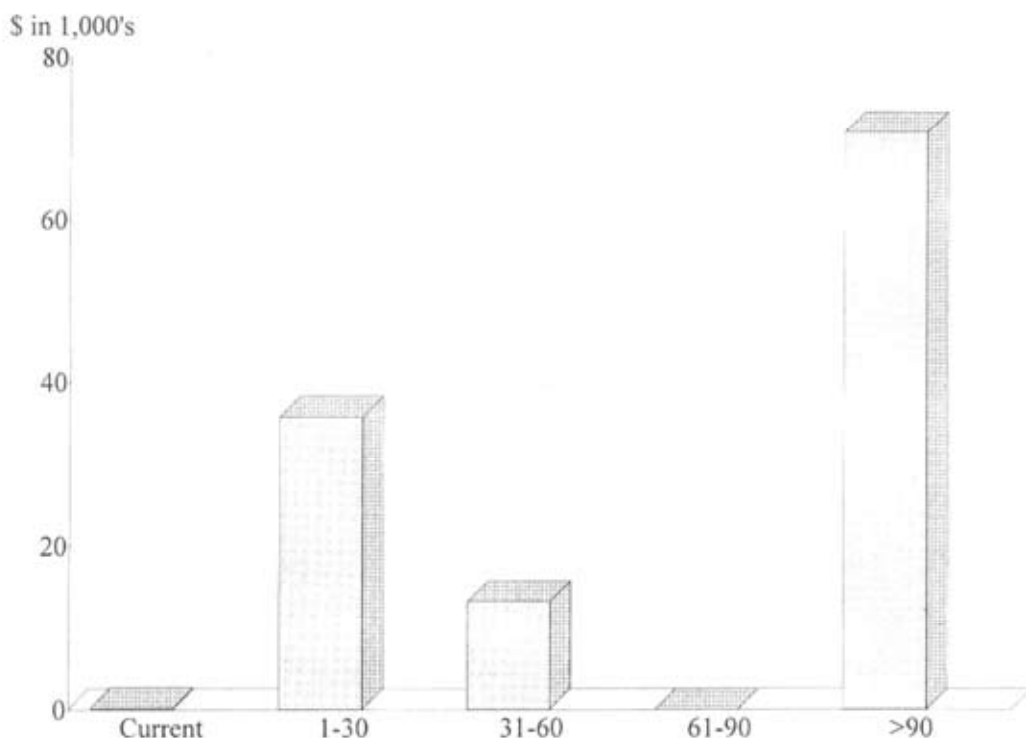


AUTO DATA SAMPLE REPORTS

Accounts Receivable by Aging Period
As of February 23, 2000

Amount Due



Accounts Receivable by Customer
As of February 23, 2000

| | |
|--------------|---------------------|
| AE | %33.31 |
| GECAP | 3.29 |
| After | 2.59 |
| Arbe | 2.50 |
| ZENI | 2.33 |
| WESTSE | 2.32 |
| NATION | 2.22 |
| PHH | 2.13 |
| BELT | 2.02 |
| ARI | 1.98 |
| Other | 45.32 |
| Total | \$120,265.65 |

